

Manual Hand Pallet Truck

25HP/25HPW

Standard Configurations

25HP

- Lifting Capacity : 2500 kg
- Polyurethane drive steering wheel
- Double Polyurethane load wheels
- Overall Fork Width x Length : 550 mm x 1150 mm
- 210° steering arc

25HPW

- Lifting Capacity : 2500 kg
- Double Polyurethane load wheels
- Overall Fork Width x Length : 550 mm x 1150 mm
- 210° steering arc
- Weighing Scale

Option

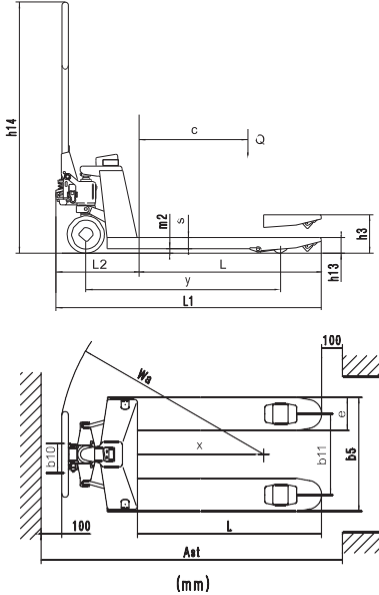
- Nylon drive wheel and double nylon load wheels
- Rubber drive wheel and double Polyurethane load wheels
- Polyurethane drive wheel and single Polyurethane load wheels
- Nylon drive wheel and single nylon load wheels
- Fully rubber wrapped handgrip
- Quick lift (5 strokes to reach max.height)
- Fork length (mm): 800; 900; 1000; 1100; 1220
- Overall fork Width x Length: 685 x 1150 mm
- Foot pedal release
- Foot pedal release extra long



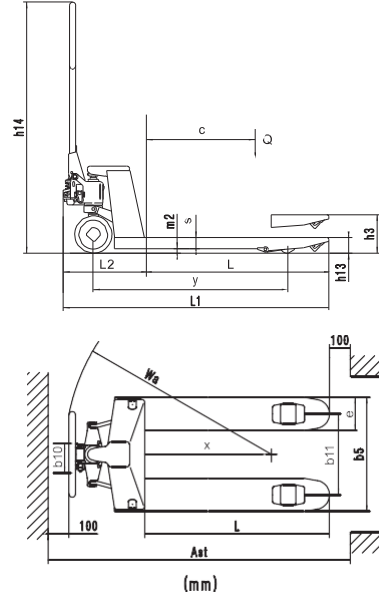
Photo may include optional equipment.

Dimension & Specification (according to VDI2198)

25HPW



25HP



Characteristics				
1.1	Manufacturer(abbreviation)		Hyundai	Hyundai
1.2	Model		25HPW	25HP
1.3	Drivetype		manual	manual
1.4	Operator type		hand	hand
1.5	Load capacity/rated load	kg	2500	2500
1.6	Load center distance	c mm	40	32 / 22
1.8	Load distance	x mm	600	600
1.9	Wheelbase	y mm	1124 / 1194	1153 / 1223
Weight				
2.1	Service weight	kg	60-80	58-70
Wheels/Chassis				
3.1	Tyres:solid rubber, superelastic, pneumatic, polyurethane		polyurethane	polyurethane
3.2	Tyre size, front(Steering wheel)	mm	Φ 200	Φ 200
3.3	Tyre size, rear(Fork wheel single)	mm	Φ 80 x93	Φ 80 x93
	Tyre size, rear(Fork wheel tandem)	mm	Φ 80 x70	Φ 80 x70
3.5	Wheelsnumber, front/rear (x = drivenwheels)		2x +2/4	2x +2/4
3.6	Tread, front	b10 mm	120	111
3.7	Tread, rear	b11 mm	360 / 390 / 525	360 / 390 / 525
Dimension				
4.4	Max. Lift height	h3 mm	200	195
4.9	Min. /Max. height of operation handle, in driving position	h14 mm	1224	1224
4.15	Height, lowered	h13 mm	85 / 75	85 / 75
4.19	Overalllength	l1 mm	1383 / 1483 / 1533 / 1603	1543 / 1613
4.20	Length to fork face	l2 mm	384	393.5
4.22	Fork dimension	s/e/l mm	45 / 160 / (1150 / 1220)	53 / 160 / (1150 / 1220)
4.25	Overall width of fork	b5 mm	520 / 550 / 685	520 / 550 / 685
4.32	Wheelbase ground distance	m2 mm	32	32
4.33	Aisle width, with pallet 1000x1200 crosswise	Ast mm	1683 / 1733 / 1803	1743 / 1813
4.34	Aisle width, with pallet 800x1200 lengthwise	Ast mm	1783 / 1783 / 1803	1783 / 1813
4.35	Turning radius	Wa mm	1216 / 1266 / 1336	1276 / 1346



Conforms to EN ISO3691-1:2012
EN1175-1:1998/A1:2010
EN16307-1:2013

- * Standard and optional equipment may vary per country. Contact your Hyundai dealer for more information.
- * The photos may include attachments and optional equipment that are not available in your area.
- * Materials and specifications are subject to change without advance notice.
- * All imperial measurements rounded off to the nearest pound or inch.

PLEASE CONTACT

